

# **An Open Laboratory for Microbial Ecology**

Russell Neches @ryneches  
Meg Pirrung @megalodonatron









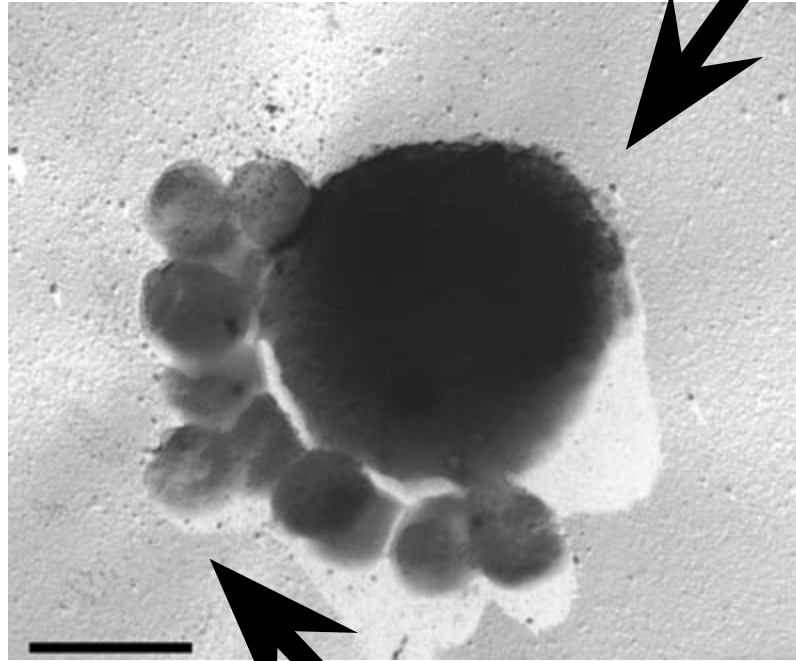








*Ignicoccus hospitalis*



*Nanoarchaeum equitans*



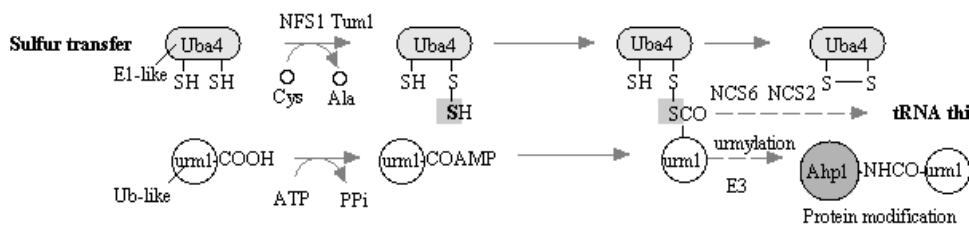
# SULFUR RELAY SYSTEM

### Ubiquitin pathway

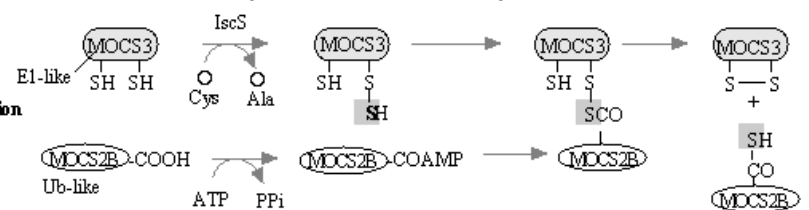


### Sulfur-relay pathway

**2-thiouridine biosynthesis** (*Saccharomyces cerevisiae*)

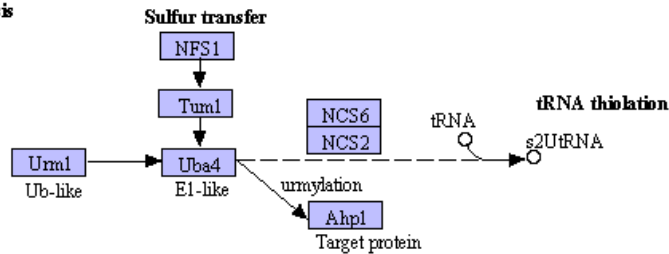


### Molybdenum cofactor (Moco) biosynthesis (Mammals)

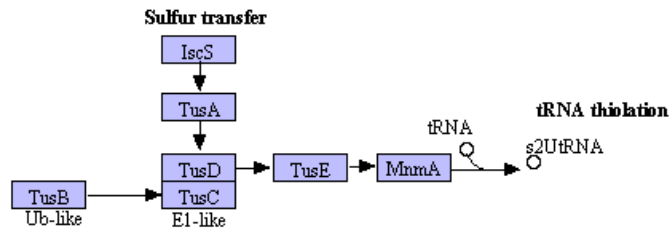


### 2-thio uridine biosynthesis

**Eukaryote**

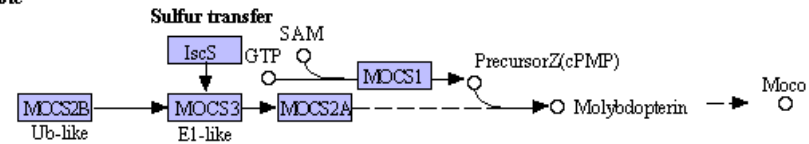


**Prokaryote**

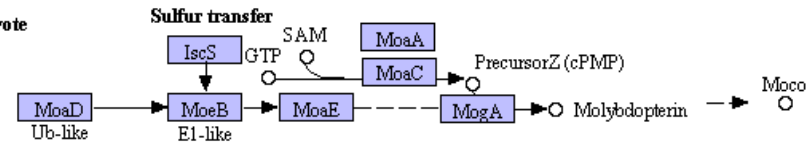


### Moco biosynthesis

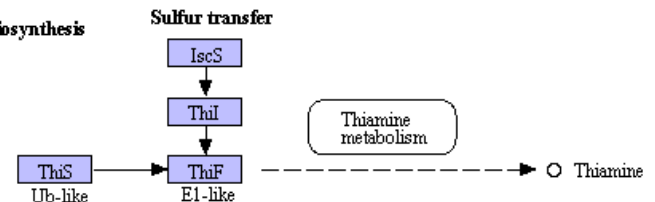
**Eukaryote**



**Prokaryote**



### Thiamin biosynthesis

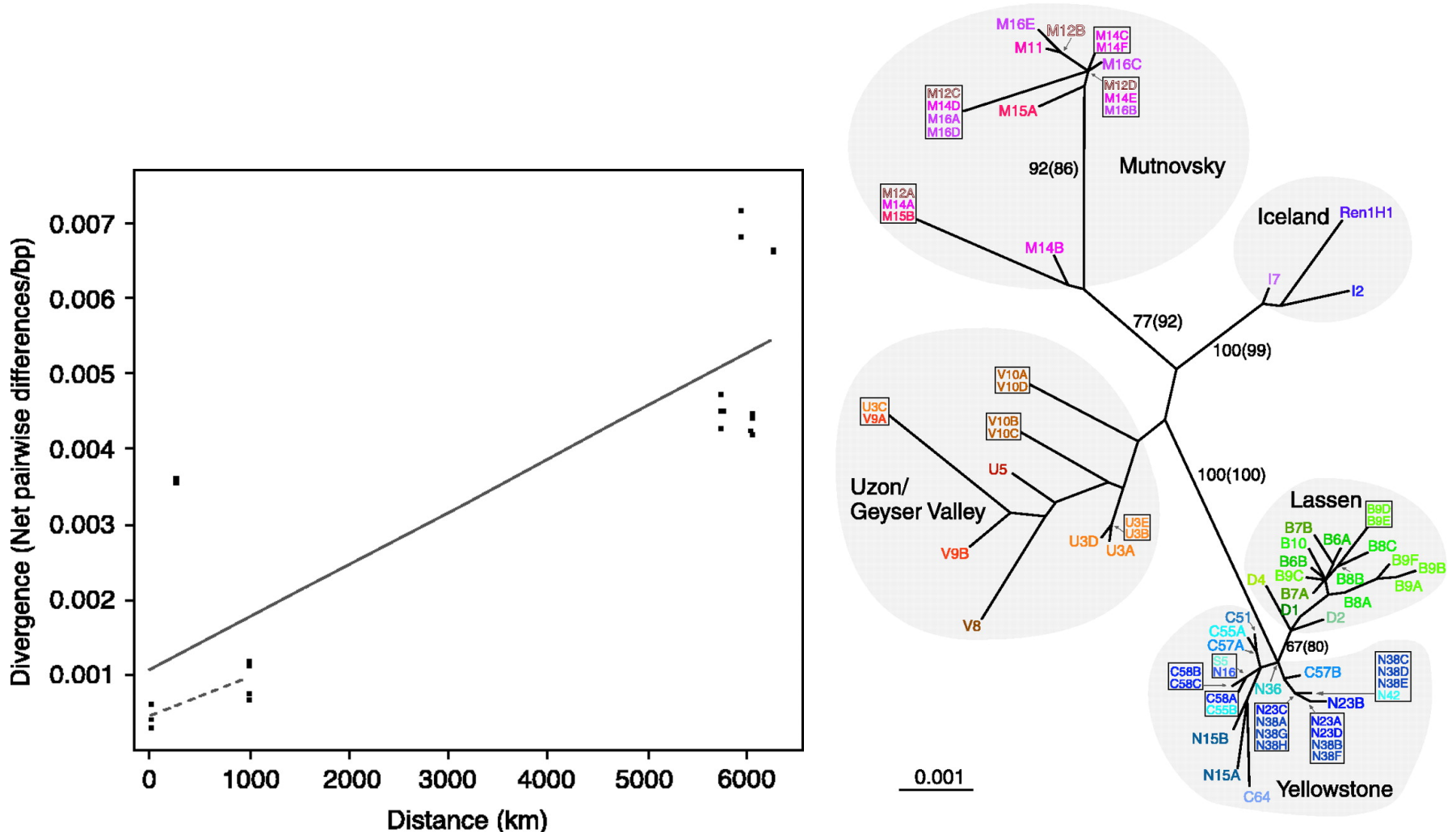






?

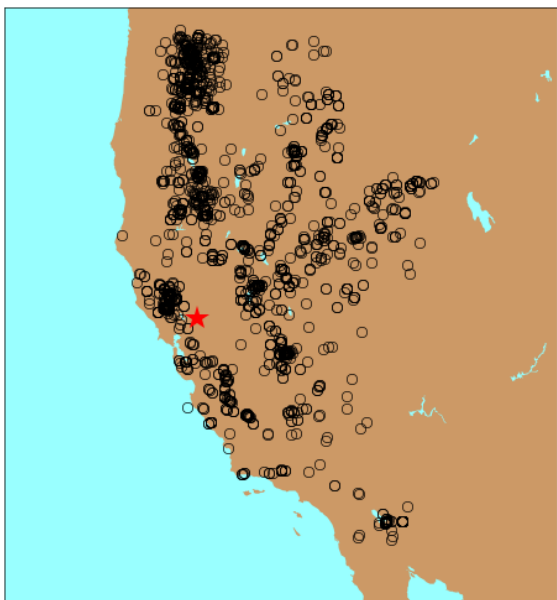




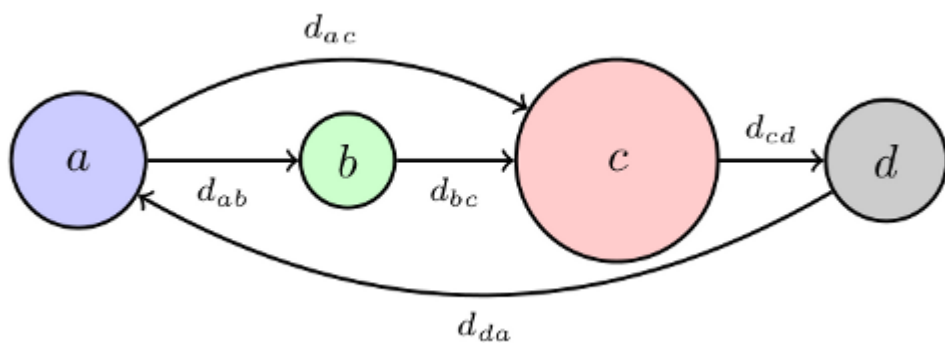
Whitaker, R. J., Grogan, D. W. & Taylor, J. W. Geographic barriers isolate endemic populations of hyperthermophilic archaea. *Science* **301**, 976-978 (2003). <http://dx.doi.org/10.1126/science.1086909>.

???

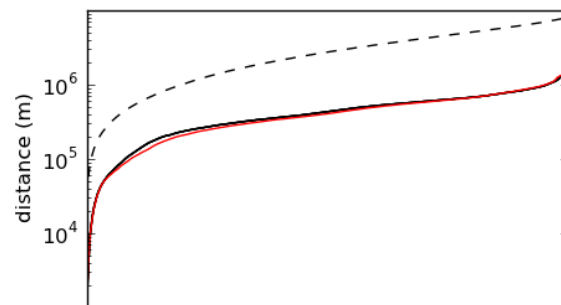




$$Q = \begin{bmatrix} & [A] & [T] & [G] & [C] \\ [A] & - & \pi_T r_{AT} & \pi_G r_{AG} & \pi_C r_{AC} \\ [T] & \pi_A r_{TA} & - & \pi_G r_{TG} & \pi_C r_{TC} \\ [G] & \pi_A r_{GA} & \pi_T r_{GT} & - & \pi_C r_{GC} \\ [C] & \pi_A r_{CA} & \pi_T r_{CT} & \pi_G r_{CG} & - \end{bmatrix}$$



$$Q = \begin{bmatrix} & [A] & [B] & [C] & [D] \\ [A] & - & \pi_B r_{AB} & \pi_C r_{AC} & \pi_D r_{AD} \\ [B] & \pi_A r_{BA} & - & \pi_C r_{BC} & \pi_D r_{BD} \\ [C] & \pi_A r_{CA} & \pi_B r_{CB} & - & \pi_D r_{CD} \\ [D] & \pi_A r_{DA} & \pi_B r_{DB} & \pi_C r_{DG} & - \end{bmatrix}$$



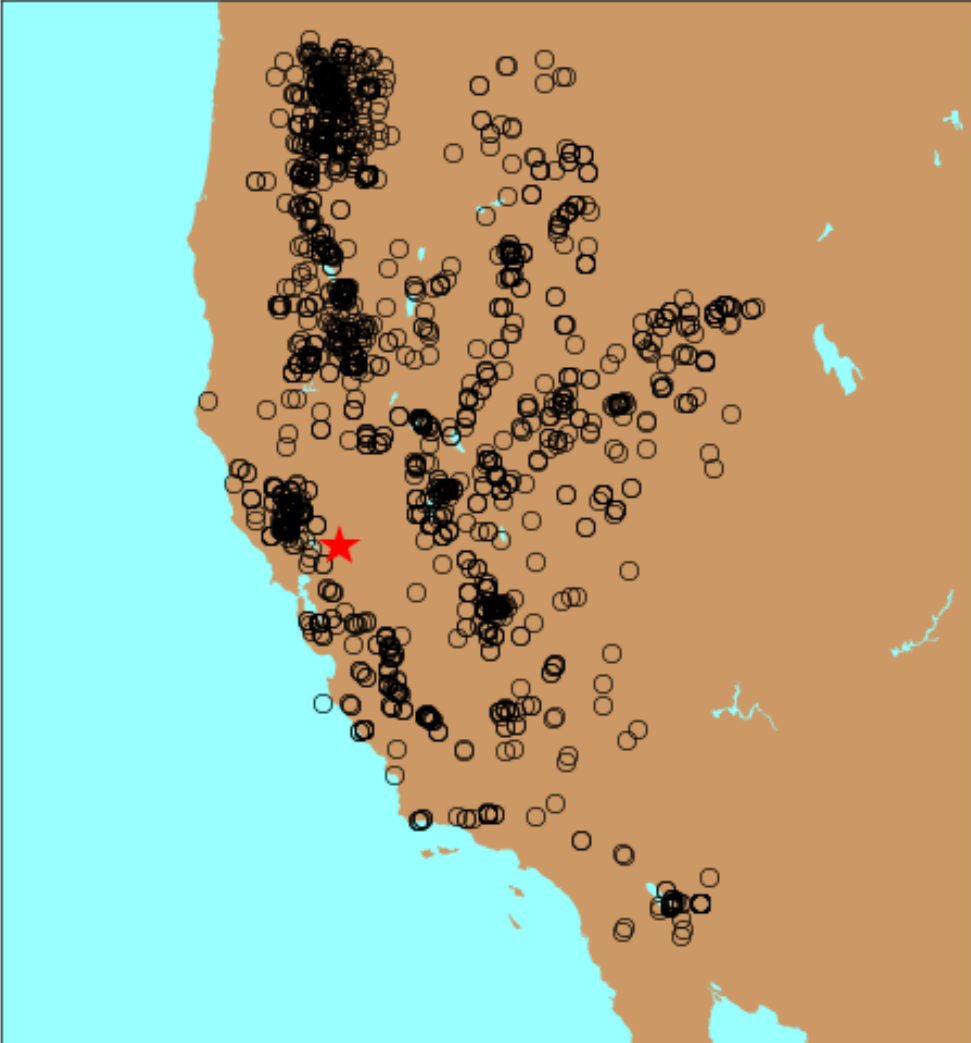
# \$6500



YSI CastAway

<http://www.ysi.com/productsdetail.php?CastAway-CTD-49>



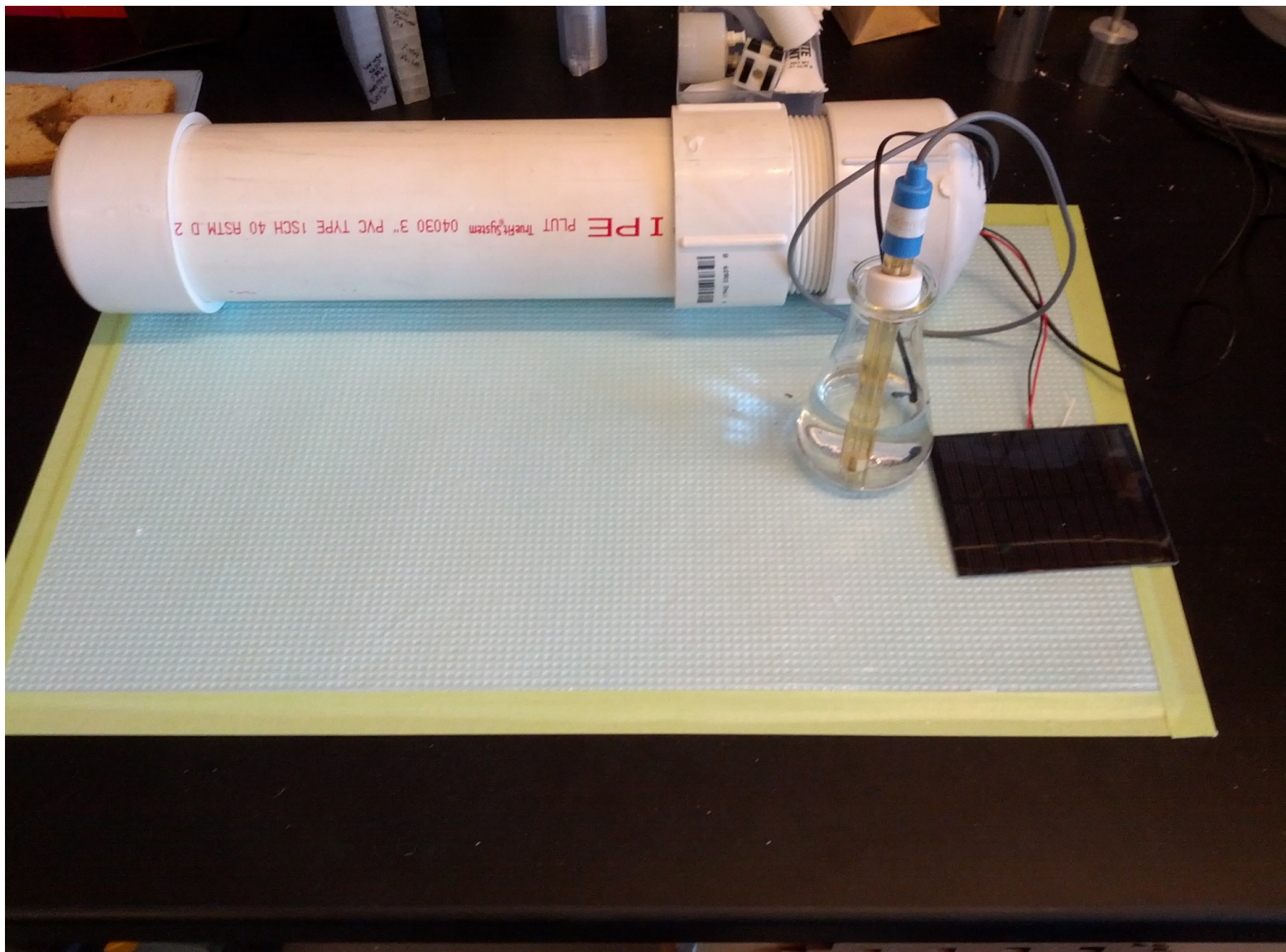


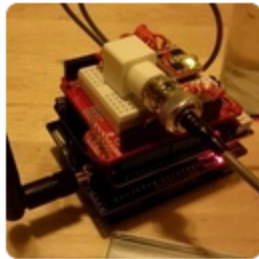
# First prototype...





# Second prototype...





## Russell's pH Meter

@RussellspHMeter FOLLOWS YOU

*I am an Open Hardware prototype device for collecting and transmitting water chemistry data from the field. I am part of @ryneches's dissertation project.*

Davis, CA · <http://vort.org/>



Following

1,067 TWEETS

2 FOLLOWING

15 FOLLOWERS

### Tweet to Russell's pH Meter

@RussellspHMeter

Tweets

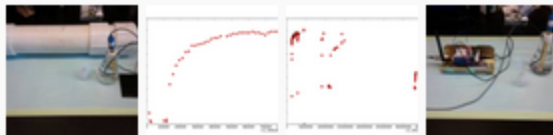
Following

Followers

Favorites

Lists

Recent images



© 2012 Twitter [About](#) [Help](#) [Terms](#) [Privacy](#)  
[Blog](#) [Status](#) [Apps](#) [Resources](#) [Jobs](#)  
[Advertisers](#) [Businesses](#) [Media](#) [Developers](#)

### Tweets



**Russell's pH Meter** @RussellspHMeter

48m

The latest pH measurement is 6.85, battery voltage 3.00, temp 22.53C

[Expand](#)



**Russell's pH Meter** @RussellspHMeter

1h

The latest pH measurement is 6.85, battery voltage 3.00, temp 22.56C

[Expand](#)



**Russell's pH Meter** @RussellspHMeter

2h

The latest pH measurement is 6.85, battery voltage 3.00, temp 22.58C

[Expand](#)



**Russell's pH Meter** @RussellspHMeter

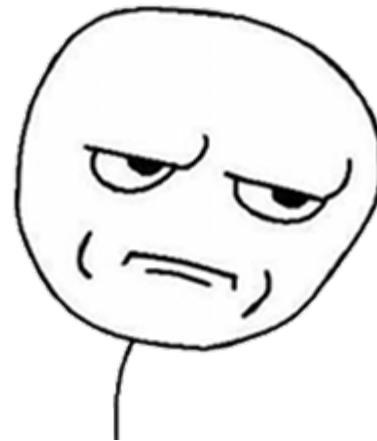
2h

The latest pH measurement is 6.85, battery voltage 3.00, temp 22.51C

[Expand](#)



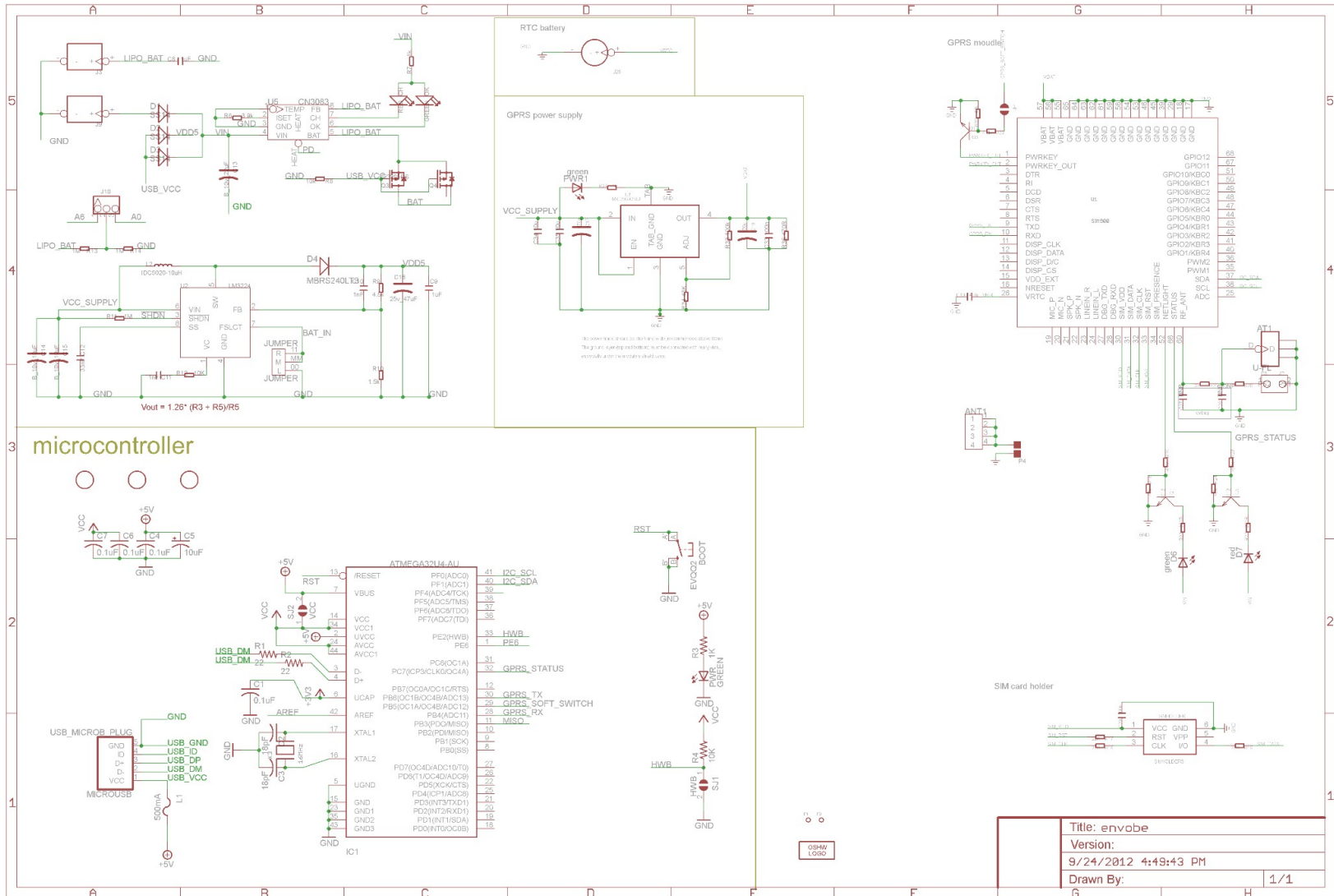
**(...although that may have to change)**



# Software...



# First production model...



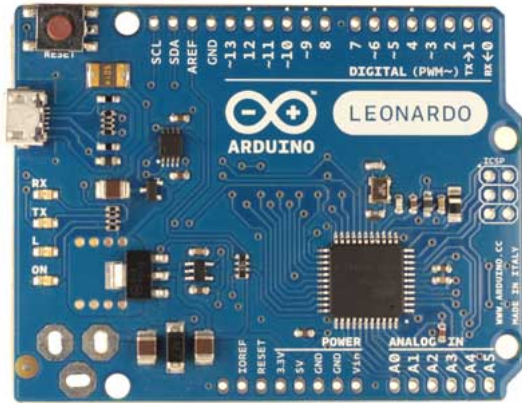


**Wait a second.**

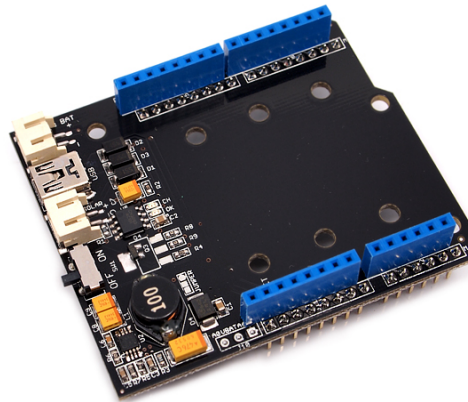
# I am not an engineer.



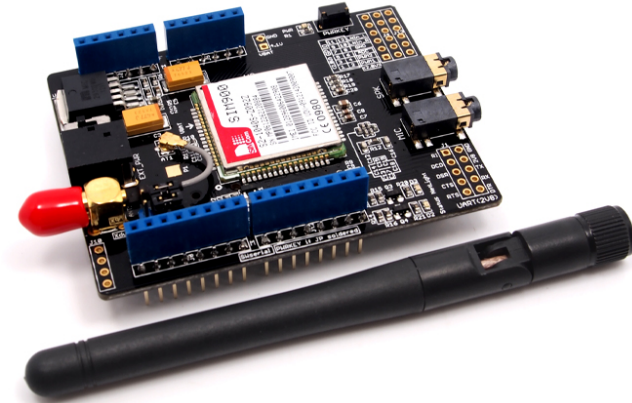
# Building blocks



Arduino Leonardo



Seed Studio Solar  
Shield



Seed Studio  
GPRS Shield









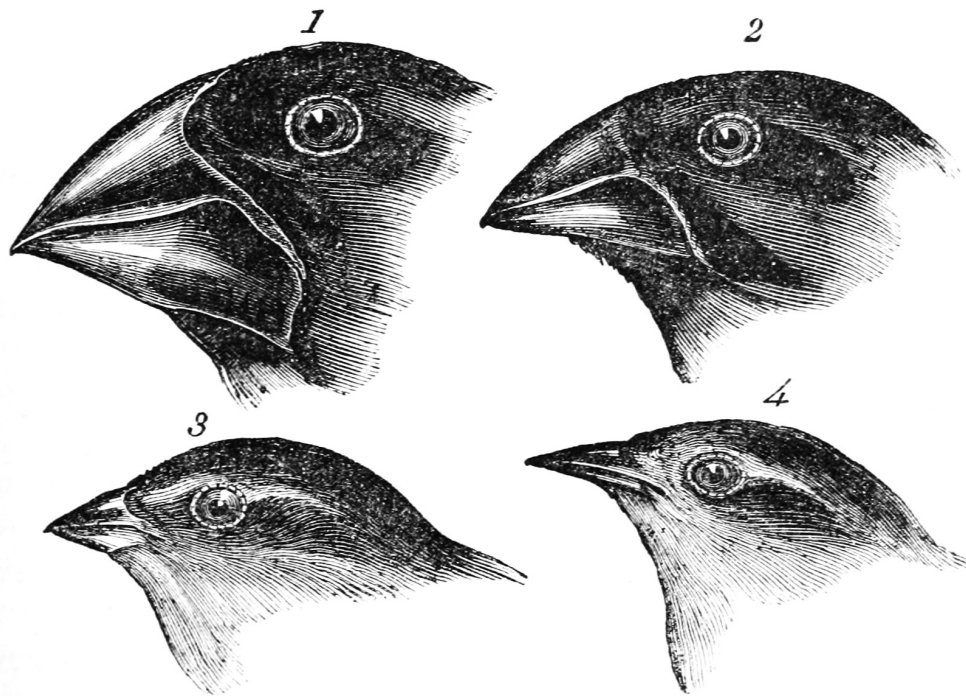
Sheet: 1 / 1



# We depend on these machines...

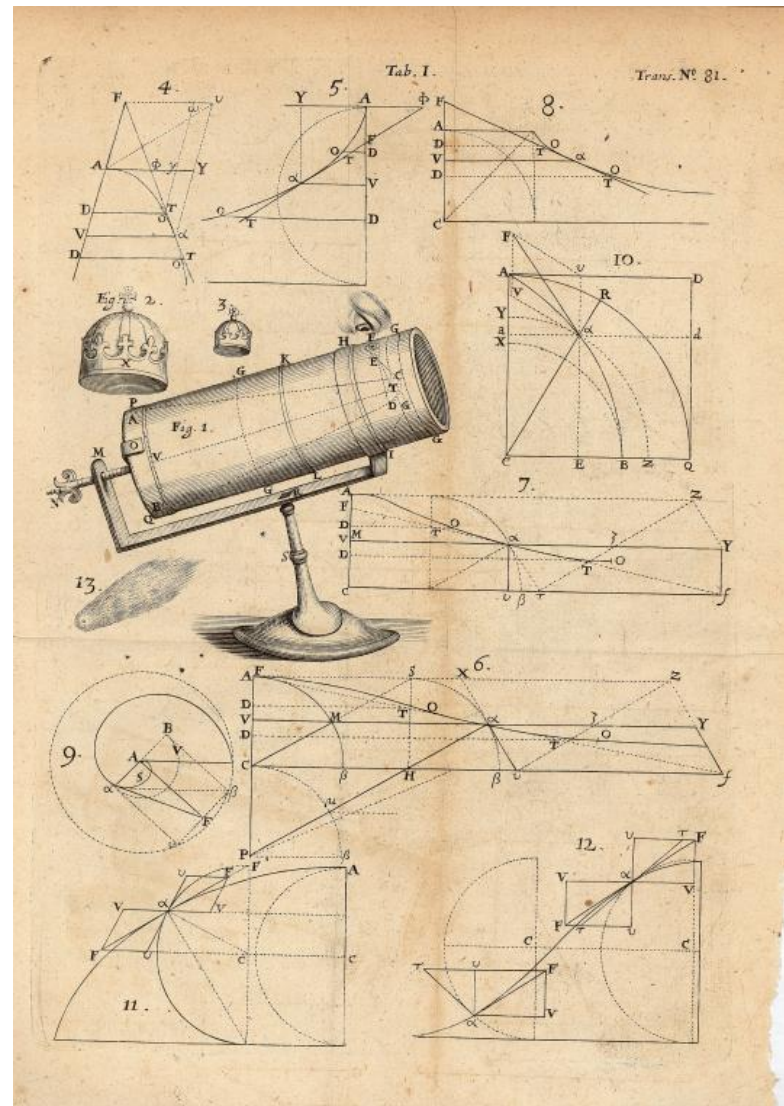


Science  
was born  
when  
researchers  
stopped  
keeping  
secrets.



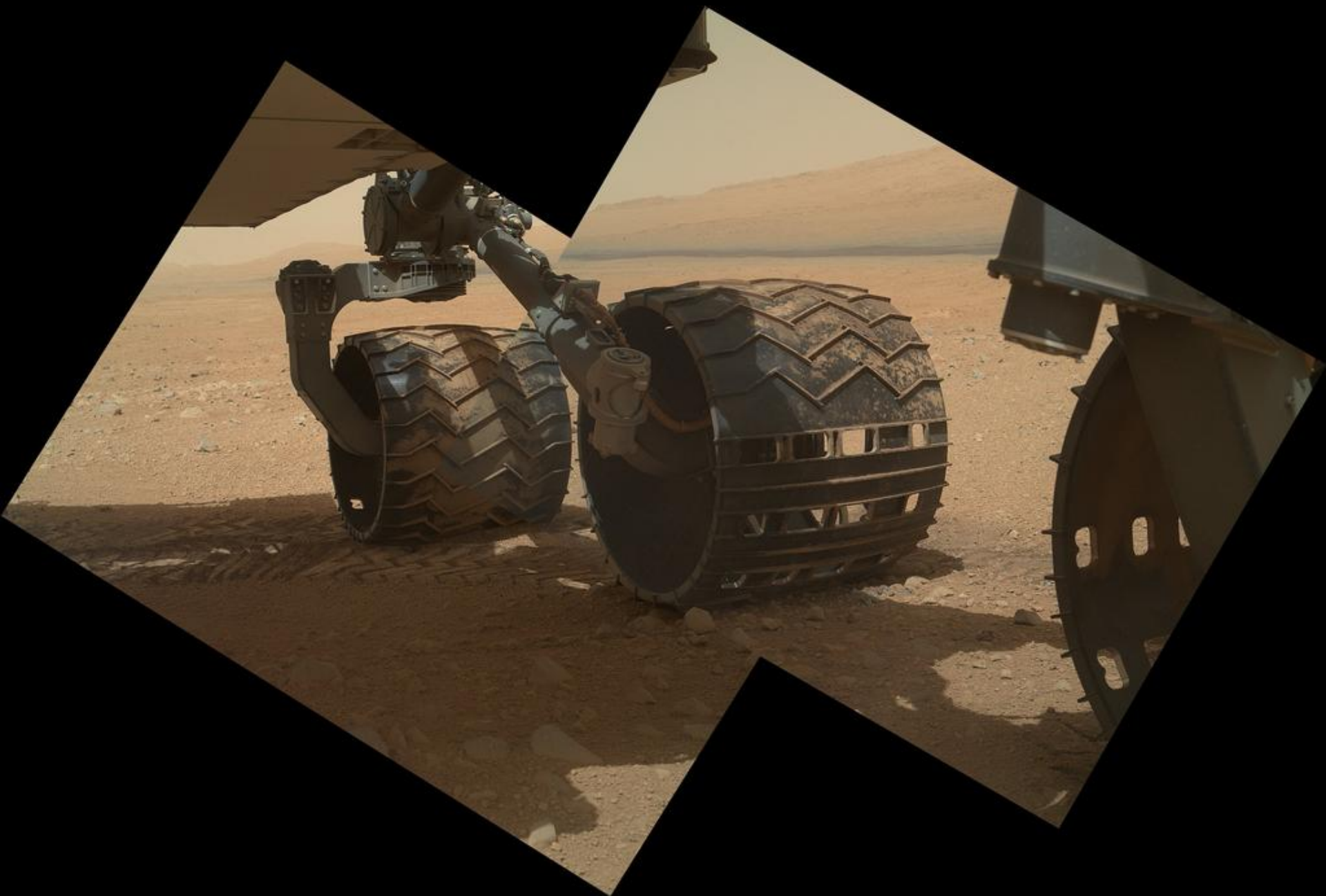
1. *Geospiza magnirostris*.  
3. *Geospiza parvula*.

2. *Geospiza fortis*.  
4. *Certhidea olivacea*.











Der Doctor Schna-

-bel von Ront









# Science Needs *You*



**...to design open instrumentation**